



1320 Parkway

Ewing Township, Mercer County, NJ

8,300 S.F. of Office Space



Ewing Township, Mercer County

• **1320 Parkway Avenue is strategically located at the intersection of Scotch Road and Parkway Avenue within one mile of I-95.**

- Suites will be customized to suit your needs
- Conveniently located minutes from I-95
- Contemporary designed entrance and lobby in a picturesque setting
- Excellent Visibility
- Directly adjacent to Suburban Square Shopping Center, whose major tenants include State of New Jersey Department of Transportation, Sierra Office Park, Crawford & Company, and The Lab, a Paul Mitchell partner school
- There is an overabundance of parking at the site

For information contact:

Penmark

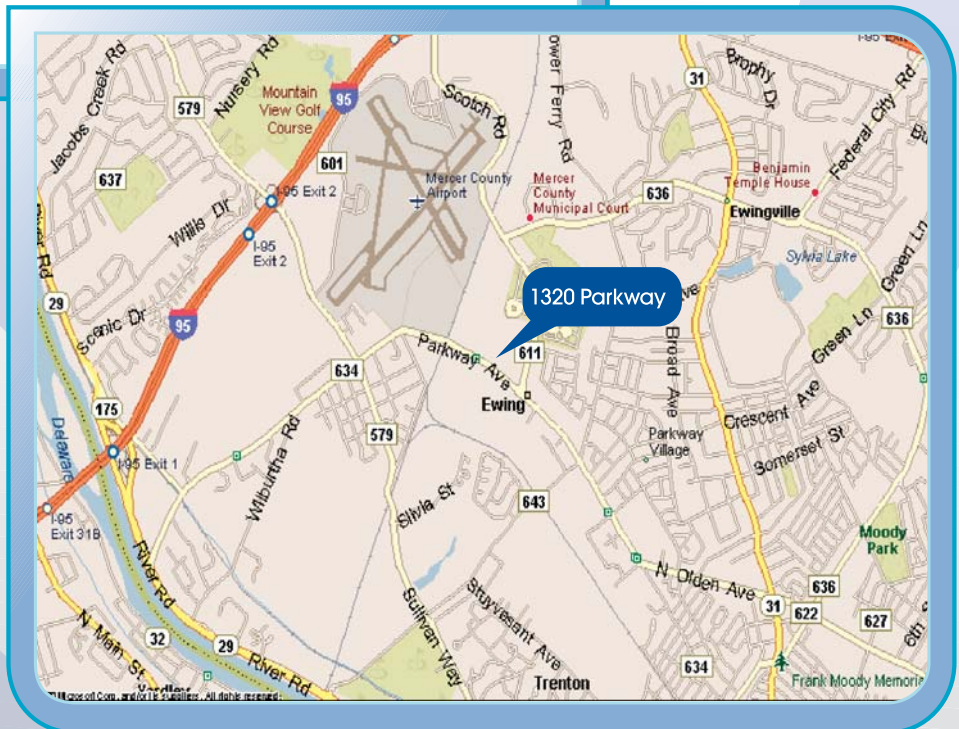
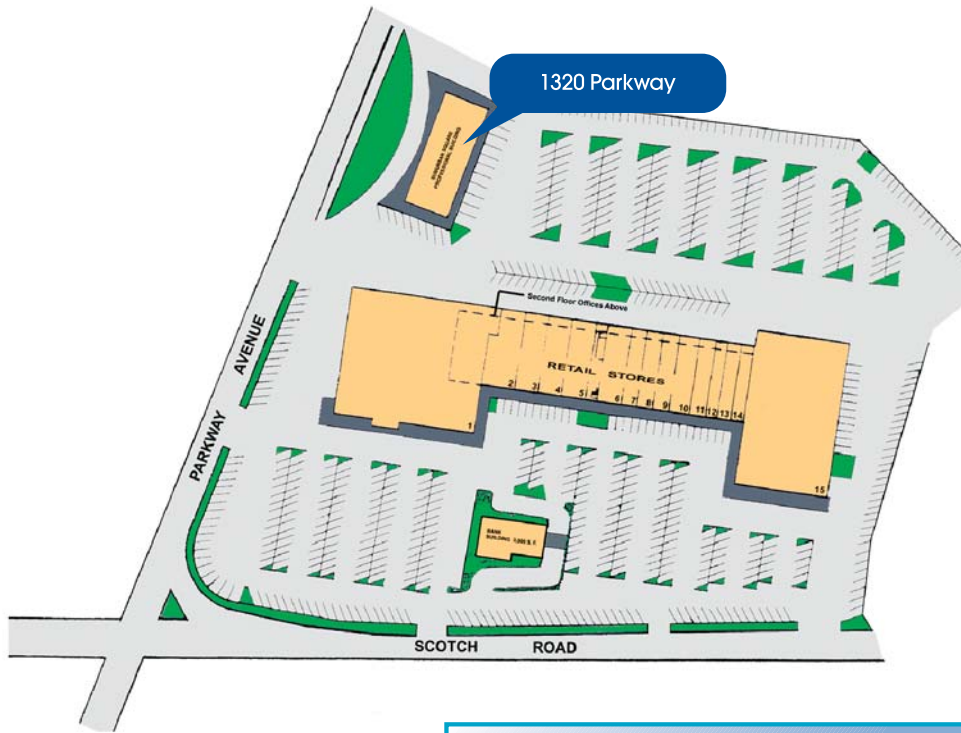
610-272-6500

leasing@penmarkproperties.com

The Penmark Process
www.penmarkproperties.com

1320 Parkway

Mercer County, New Jersey



The Pennmark Process

www.pennmarkproperties.com